

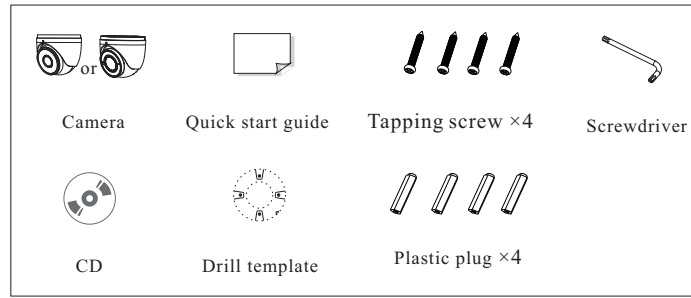
Network Camera Quick Start Guide

- Please read this instruction carefully before operating the unit and keep it for further reference.
- All the examples and pictures used here are for reference only.
- The contents of this manual are subject to change without notice.

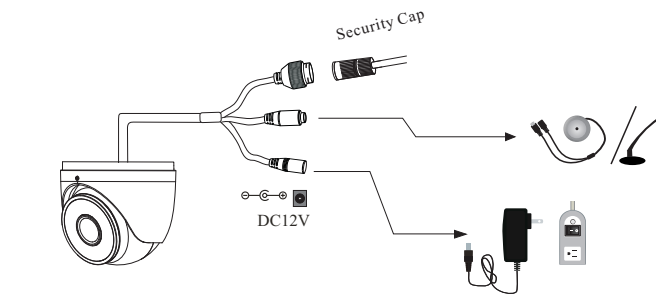
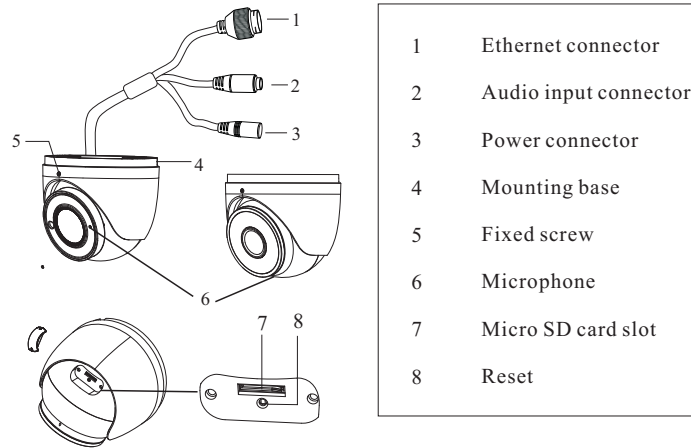
1 Warning and Caution

- If the product does not work properly, please contact your dealer or the nearest service center. Never attempt to disassemble the camera yourself. (We shall not be responsible for any problems caused by unauthorized repair or maintenance.)
- Do not allow water or liquid intrusion into the camera.
- In the use of the product, you must be strict compliance with the electrical safety regulations of the nation and region. When the product is mounted on wall or ceiling, the device shall be firmly fixed.
- Do not use camera beyond specified voltage range.
- Do not drop the camera or subject it to physical shock.
- Avoid touching the camera lens.
- If cleaning is necessary, please use clean cloth to wipe it gently.
- Do not aim the camera at the sun or extra bright place.
- Do not place the camera in extremely hot, cold (the operating temperature shall be $-30^{\circ}\text{C}\sim 60^{\circ}\text{C}$), dusty or damp locations, and do not expose it to high electromagnetic radiation.
- To avoid heat accumulation, good ventilation is required for operating environment.

2 Package

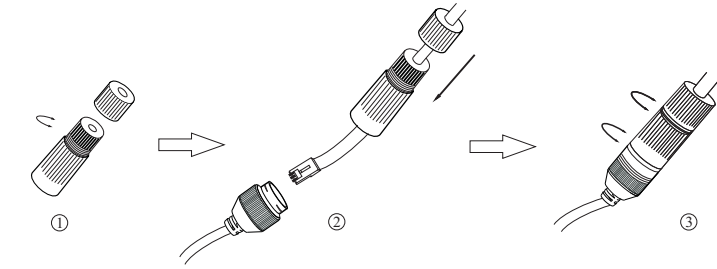


3 Overview



- * 1 It is recommended to install the security cap for outdoor installation.
- * 2 If the PoE switch is used to power the camera, DC12V power supply is not required.

► Connecting Network Cable

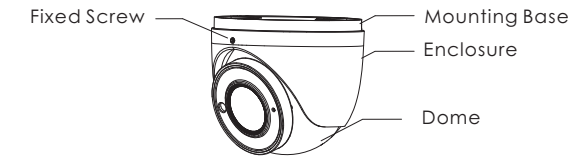


- ① Loosen the nut from the main element.
- ② Run the network cable (without RJ 45 connector) through the both elements. Then crimp the cable with RJ 45 connector.
- ③ Connect the cable to the hermetic connector. Then tighten the nut and the main cover.

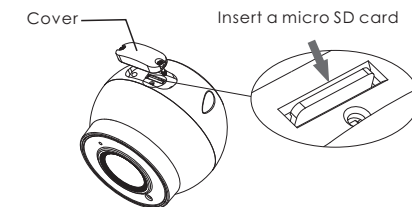
4 Installation

Please make sure that the wall or ceiling is strong enough to withstand 3 times the weight of the camera.

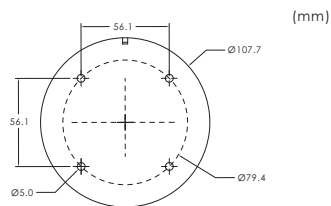
- ① Loosen the fixed screw to disassemble the camera.



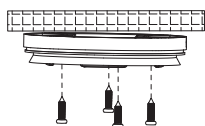
- ② Open the cover of the dome and then insert a micro SD card.



- ③ Drill the screw holes and the cable hole on the wall according to the drill template.



④ Route and connect the cables. Then secure the mounting base to the ceiling or wall with the screws provided.



⑤ Install the cover back to the camera and fix it with the screws firmly. (Note that the cover should not be installed unevenly.)

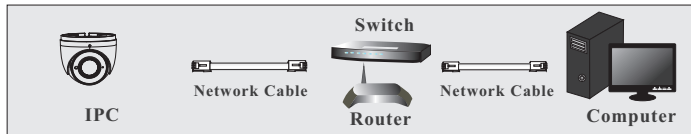
⑥ Install the dome and enclosure to the mounting base and then adjust the dome to obtain an optimum view angle. Finally, fix the camera with the fixed screw.



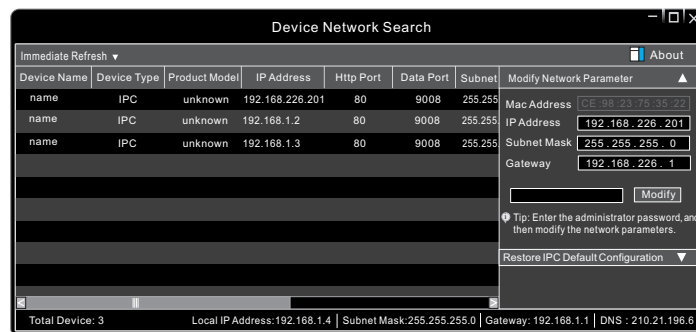
5 Network Connection

In LAN, there are two ways to access the camera. 1. Access Through IP-Tool; 2. Direct Access Through WEB Browser

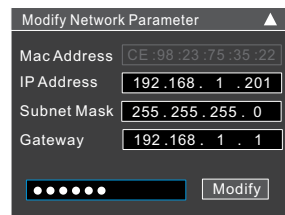
● Access Through IP-Tool



- ① Make sure that the camera and the PC are connected to the local network.
- ② Install IP-Tool from the CD and run it after installation.



- ③ Modify the IP address. The default IP address of this camera is 192.168.226.201. Click the information of the camera listed in the above table to show the network information on the right hand. Modify the IP address and gateway of the camera and make sure its network address is in the same local network segment as the computer's. Please modify the IP address of your device according to the practical situation.



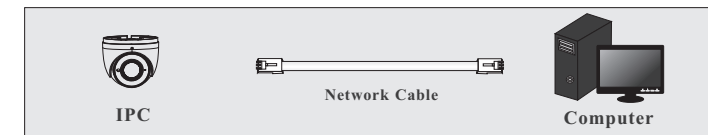
For example, the IP address of your computer is 192.168.1.4. So the IP address of the camera shall be changed to 192.168.1.X. After modification, please enter the password of the administrator and click “Modify” button to modify the setting.

⚠ The default password of the administrator is “123456”.

- ④ Double click the IP address and then the system will open up the web browser. Follow directions to download the plugin. Then enter the user name and password in the login interface.

⚠ The default username is **admin**; the default password is **123456**.

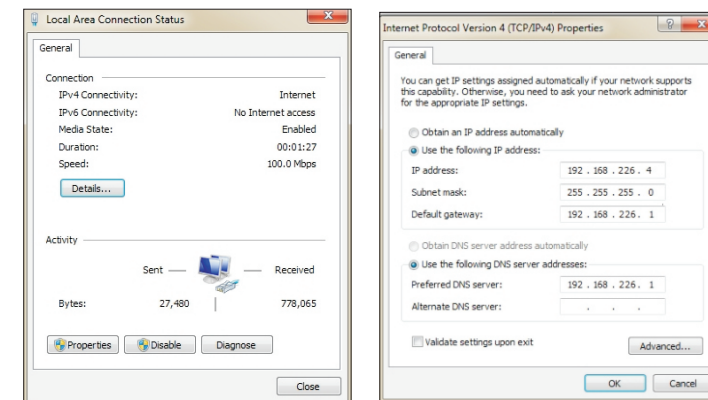
● Direct Access Through WEB Browser



The default network settings are as shown below:
 IP address: 192.168.226.201 HTTP:80
 Subnet Mask: 255.255.255.0 Data Port:9008
 Gateway: 192.168.226.1

You may use the above default settings when you log in the camera for the first time.

- ① Set the IP address of the PC and make sure the network segment should be as the same as the default settings of IP-CAM. Open the network and share center. Click “Local Area Connection” to pop up the following window. Select “Properties” and then select Internet protocol according to the actual situation (for example: IPv4). Next, click “Properties” button to set the network of the PC.



- ② Open the web browser and enter the default address of IP-CAM and confirm.
- ③ Follow directions to download the plugin.
- ④ Enter the default username and password in the login interface to log in.