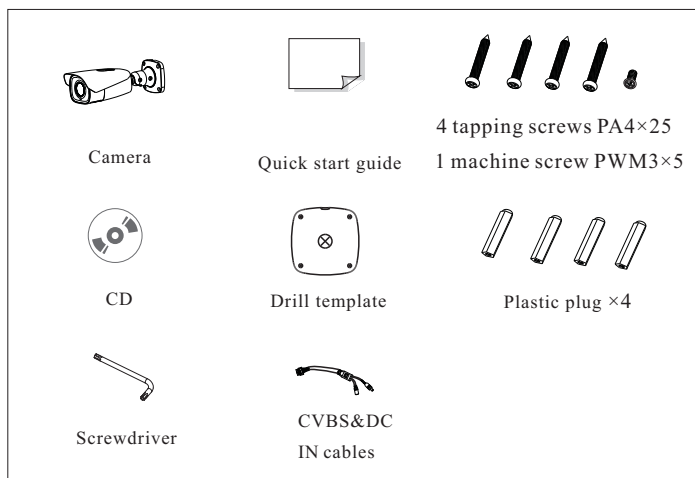
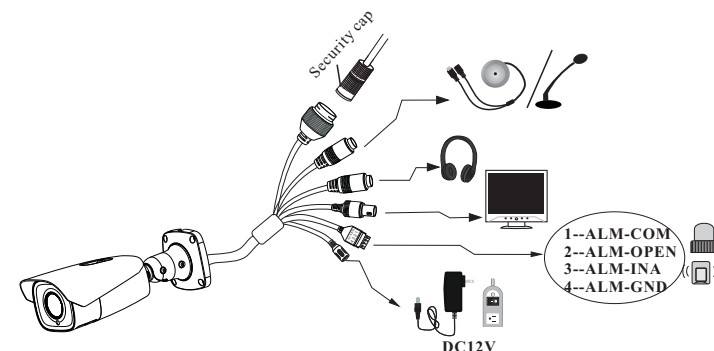


## Network Camera Quick Start Guide

- Please read this instruction carefully before using the product and keep it for further reference.
- All the examples and pictures used here are for reference only.
- The contents of this manual are subject to change without notice.



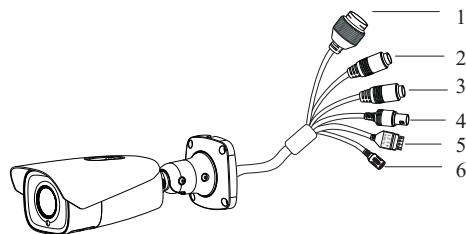
- \* 1 It is recommended to install the security cap for outdoor installation.
- \* 2 This series can be powered by DC 12V/PoE power supply. If the PoE switch is used to power the camera, DC12V power supply is not required.



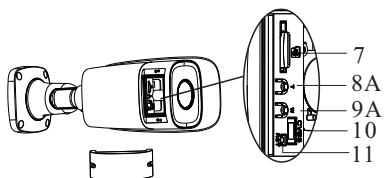
## 1 Warning and Caution

- If the product does not work properly, please contact your dealer or the nearest service center. Never attempt to disassemble the camera yourself. (We shall not be responsible for any problems caused by unauthorized repair or maintenance.)
- Do not allow water or liquid intrusion into the camera.
- In the use of the product, you must be strict compliance with the electrical safety regulations of the nation and region. When the product is mounted on wall or ceiling, the device shall be firmly fixed.
- Do not use camera beyond specified voltage range.
- Do not drop the camera or subject it to physical shock.
- Avoid touching the camera lens.
- If cleaning is necessary, please use clean cloth to wipe it gently. If the device will not be used for a long time, please cover the lens cap to protect the device from dirt.
- Do not aim the camera at the sun or extra bright place.
- Do not place the camera in extremely hot, cold (the operating temperature shall be  $-30^{\circ}\text{C}\sim 60^{\circ}\text{C}$ ), dusty or damp locations, and do not expose it to high electromagnetic radiation.
- To avoid heat accumulation, good ventilation is required for operating environment.

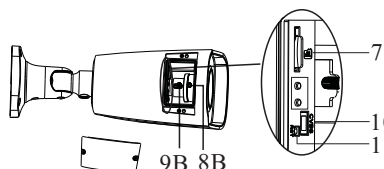
## 3 Overview



Type A: Motorized zoom camera



Type B: Manual zoom camera



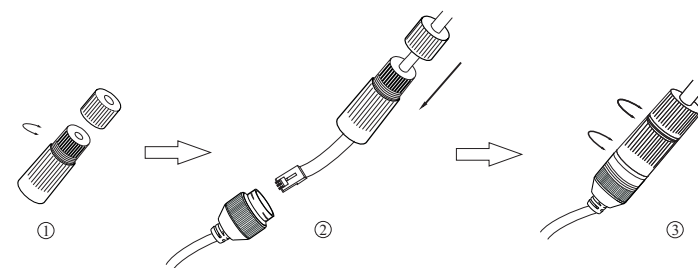
- 1 Ethernet Connector \*
- 2 Audio Input (MIC)
- 3 Audio Output (HP)
- 4 CVBS Video Output
- 5 Alarm Input/Output
- 6 Power Connector \*
- 7 Micro SD Card Slot
- 8A Zoom +
- 9A Zoom -
- 8B Focus
- 9B Zoom
- 10 DC IN & CVBS Interface
- 11 Reset

### ● Alarm Connection

**Alarm Input:** Join the grounding ends of the sensor and the camera and then connect the signal cable of the sensor to the alarm input port of the camera.

**Alarm Output:** Loosen the screws in the alarm output port. Then insert the signal wires of the alarm output devices into the port of COM and OPEN separately. Finally tighten the screws. Some of the external alarm output devices need the power supply.

### ● Connecting Network Cable



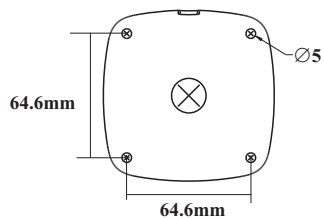
- ① Loosen the nut from the main element.
- ② Run the network cable (without RJ 45 connector) through the both elements. Then crimp the cable with RJ 45 connector.
- ③ Connect the cable to the hermetic connector. Then tighten the nut and the main cover.

## 2 Package

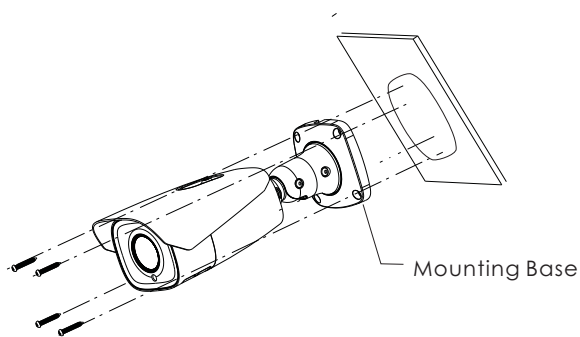
## 4 Installation

Please make sure that the wall or ceiling is strong enough to withstand 3 times the weight of the camera. Please install the camera in the dry environment. You'd better install back the cover of the camera less than 4 hours after removing it.

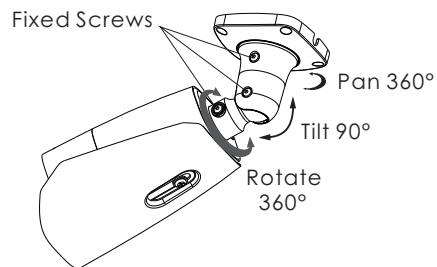
① Drill the screw holes and the cable hole (if you want to route through the ceiling) on the wall or ceiling according to the drill template.



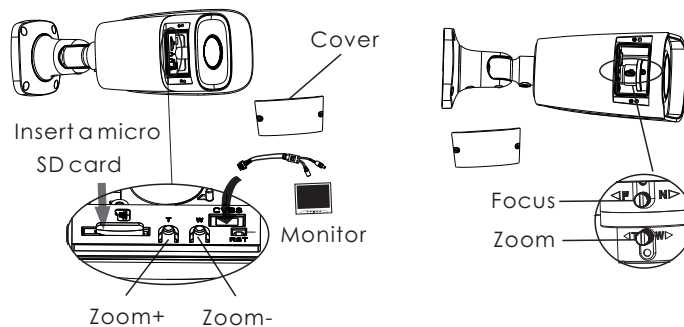
- ② Route the cables and connect the relevant cables.
- ③ Fasten the mounting base to the wall with the screws provided.



④ Bracket adjustment. Before adjustment, preview the image of the camera on a monitor (See the left figure of step ⑤) and then loosen the fixed screws to adjust the view angle of the camera. After that, tighten the fixed screws.

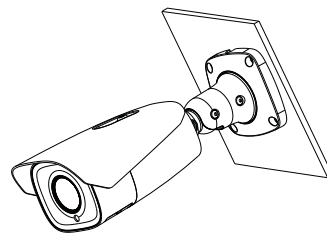


⑤ Open the cover of the camera as shown in the following figure and then insert a micro SD card. After that, adjust Zoom or Focus to obtain an optimum image. Press the T or W button for Type A; adjust the Focus and Zoom screws for Type B. Before adjustment, view the image of the camera on a monitor.



Type A: Motorized zoom camera      Type B: Manual zoom camera

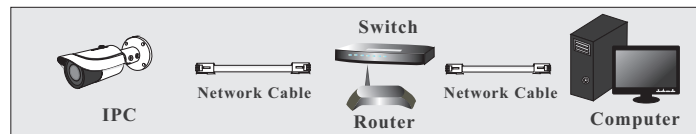
⑥ Install the cover back to the camera and fix it firmly with the screws. (Note that the cover should not be installed unevenly.)



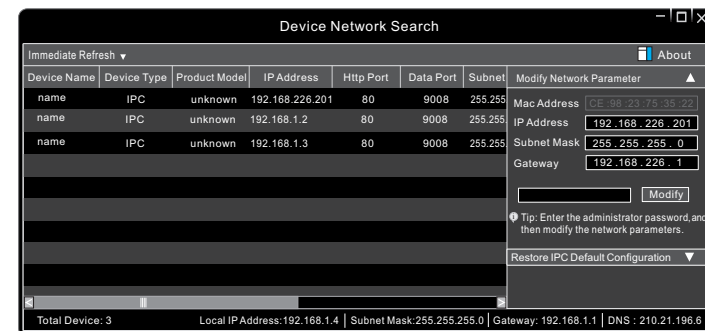
## 5 Network Connection

Here we take accessing IP camera via LAN for example.

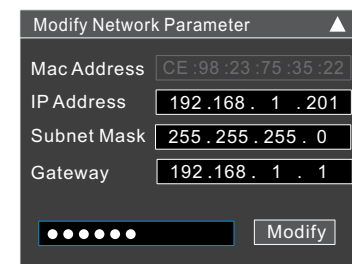
### ● Access Through IP-Tool



- ① Make sure that the camera and the PC are well connected to the LAN.
- ② Find the IP-Tool from the CD and then install it in the computer. After that, run the IP-Tool as shown below.



③ Modify the IP address. The default IP address of this camera is 192.168.226.201. Click the information of the camera listed in the above table to show the network information on the right hand. Modify the IP address and gateway of the camera and make sure its network address is in the same local network segment as that of the computer. Please modify the IP address of your device according to the practical situation.



For example, the IP address of your computer is 192.168.1.4. So the IP address of the camera shall be changed to 192.168.1.X. After modification, please enter the password of the administrator and click “Modify” button to modify the setting.

- ⚠ The default password of the administrator is “123456”.
- ④ Double-click the IP address to open up the web browser or manually enter the modified IP address in the address bar of your browser. Then follow directions to download and install the plugin if it is the first time for you to log in.
- ⑤ Enter the user name and password in the login interface.
- ⚠ The default username is **admin**; the default password is **123456**.