

CAMERA

TD-7420AS1L

2MP HD Analog IR Bullet Camera



- 1080P real-time image, high resolution, true color
- AHD / TVI / CVI / CVBS standard and lossless video output
- Up to 1000 TVL resolution
- CMOS progressive scan, perfectly capture the moving object
- Support OSD menu
- High speed, long distance and real time transmission
- Auto color to B / W at low illumination
- Support ICR switch, true day / night, digital WDR
- Support noise reduction function
- 10 ~ 20m IR night view distance
- IP66 ingress protection
- Support COC



en.tvt.net.cn

For more information, please visit our website

Shenzhen TVT DIGITAL TECHNOLOGY CO., LTD.

Address: 23rd Floor, Block B4, Building NO.9, Shenzhen Bay
Eco-Technology Park, Nanshan District, Shenzhen, Guangdong
Province, P.R.China

Tel: +86-755-36995888

Web site: <http://en.tvt.net.cn>

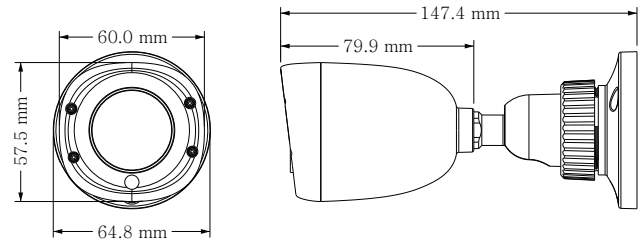
Fax: +86-755-33104777

E-mail: overseas@tvt.net.cn

SPECIFICATIONS

Model	TD-7420AS1L
Specifications	
Camera	
Image Sensor	1 / 3.2"CMOS
Resolution	2MP
Image Size	1920 x 1080
Video Output	AHD / TVI / CVI / CVBS
Image System	PAL / NTSC
Electronic Shutter	Auto; 1 / 50s ~ 1 / 100000s (PAL); 1 / 60s ~ 1 / 100000s (NTSC)
IR Distance	10 ~ 20 m
Frame Rate	30fps(60Hz); 25fps (50Hz)
Min. Illumination	0 lux (IR ON)
Lens	3.6 mm
Lens Mount	M12
S / N Ratio	≥52dB (AGC OFF)
Ingress Protection	IP 66
Functions	
Function Control	OSD (COC Control)
Day & Night	ICR
Digital WDR	Yes
Digital NR	Yes
AGC	Yes
Auto White Balance	Yes
BLC	Yes
FLC	Yes
Defog	No
HLC	No
Sharpness	Yes
Mirror	Yes
Smart IR	Yes
Image Setting	Yes
Defect Correction	Auto
Language	Chinese and English
Angle Adjustment	Pan: 0°~360°; Tilt: 0°~90°; Rotation: 0°~360°
Others	
Power Supply	DC12V (± 10%)
Power Consumption	IR OFF : < 1W; IR ON : < 3W
Working Environment	- 30 °C ~ 50 °C, 10 % ~ 90 % (relative humidity)
Dimensions (mm)	Φ 64.8 x 147.4
Weight (net)	Approx. 0.15KG

DIMENSIONS



AVAILABLE ACCESSORIES



AVAILABLE MODEL

Available Model	TD-7420AS1L(D/IR1)
-----------------	--------------------