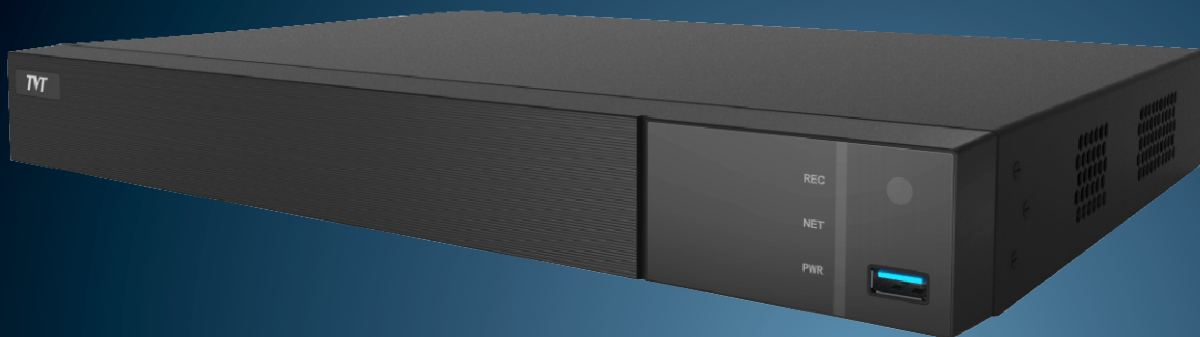




Secure The World With You

www.tvt.net.cn

16 CH PoE NVR HDMI Display



TD-3216H2-16P

8MP / 5MP / 4MP / 3MP / 1080P / 960P / 720P HD PoE NVR



TVT DIGITAL TECHNOLOGY CO., LTD.

Address: 5F, North Block, CE Lighting House, Hi-Tech Park, Nanshan District, Shenzhen City, Guangdong Province, P.R.China 518057

Tel: +86-755-3330 6001

Fax: +86-755-3330 6002

Web site: www.tvt.net.cn

E-mail: overseas@tvt.net.cn



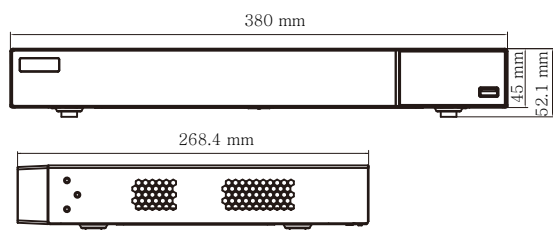
Introduction

TD-3216H2-16P series are 16 CH 8MP / 5MP / 4MP / 3MP / 1080P / 960P / 720P high definition PoE NVRs, which adopt the most advanced SOC technique to ensure high definition recording in each channel and realize outstanding robustness of the system. TD-3216H2-16P series integrate with 16 PoE network ports, support 16 CH IPC direct connection to NVR, simultaneous 16 CH playback, and 4K high definition display. The series of product can meet different security requirements of home, financial, commerce, enterprise, transportation and government, etc.

Characteristics

- Support 16 CH 8MP / 5MP / 4MP / 3MP / 1080P / 960P / 720P IP input
- Adopt standard H.265 and H.264 high profile compression format to get high-quality video at much lower bit rate
- Intuitive and user-friendly Graphic User Interface (GUI), Windows style operation by mouse
- Multi-mode recording: manual / timer / motion / sensor
- Playback : 16 CH simultaneous playback
- Search : time slice, time, event (manual, sensor, motion), tag search
- Express and flexible backup via USB, network and so on
- Pentaplex : preview, record, playback, backup and remote access
- DHCP, DDNS, PPPoE network protocol and CMS supported
- Remote control via IE or CMS : preview, playback, backup, PTZ and configuration
- 16 PoE network ports, support IPC direct connection to NVR; support PoE power supply
- Dual stream technology for local storage with high definition, remote network transmission and remote surveillance with mobile device
- Multi-user online simultaneously
- Authorization management, log view and device status view
- 4K output, true high resolution display
- Support PTZ preset and auto cruise, up to 255 presets and 8 cruises
- Support NAT function and QRCode scanning by mobile phone and PAD
- Powerful smart phone & Pad surveillance with iOS and Andriod OS

Dimensions



Specification

Model		TD-3216H2-16P
System	Compression	Standard H.265, H.264
	OS	Embedded Linux
Video	Network Input	16 CH IPC input
	Network Access Bandwidth	112Mbps
	Network Access Format	8MP / 5MP / 4MP / 3MP / 1080P / 960P / 720P@25 / 30fps
	Output	HDMI × 1 : 3840 × 2160 / 1920 × 1080 / 1280 × 1024 / 1024 × 768 VGA × 1 : 1920 × 1080 / 1280 × 1024 / 1024 × 768
Audio	Network Input	16 CH IPC audio input
	2-way Audio	RCA × 1
	Local Output	RCA × 1
Record	Record Stream	Dual stream recording
	Resolution	8MP / 5MP / 4MP / 3MP / 1080P / 960P / 720P
	Mode	Manual, timer, motion, sensor
Playback	Simultaneous Playback	Max 16 CH
	Search	Time slice / time / event / tag search
	Smart Search	Highlighted color to display the camera record in a certain period of time, different colors refers to different record events
	Function	Play, pause, FF, FB, digital zoom, etc.
Alarm	Mode	Manual, sensor, motion, exception
	Input	Support IPC alarm input
	Output	Support IPC alarm output
	Triggering	Record, snap, preset, e-mail, etc.
Network	Interface	RJ45 10 / 100 / 1000 Mbps × 1
	PoE Port	RJ45 × 16
	Protocol	TCP / IP, PPPoE, DHCP, DNS, DDNS, UPnP, NTP, SMTP
Mobile Device	OS	iOS, Andriod
Storage	HDD	SATA × 2, max 8T per HDD
Backup	Local Backup	U disk, USB mobile HDD
	Network Backup	Yes
Port	USB	USB 2.0 × 2 (one in the front panel and the other in the rear panel)
	Remote Controller	Optional
Others	Power Supply	DC48V
	Consumption	≤ 15W (without HDD)
	Dimensions (mm)	380 × 268 × 52 (W × D × H)
	Work Environment	-10 ~ 50 °C , 10% ~ 90% humidity

Rear Panels

