

Hybrid DVR Quick Start Guide

1. Notes

- Please read this instruction carefully before using the product and keep it for further reference.
- All the examples and pictures used here are for reference only.
- The contents of this manual are subject to change without notice.
- This device should be operated only from the type of power source indicated on the marking label. The voltage of the power must be verified before using the same.

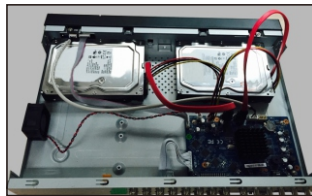
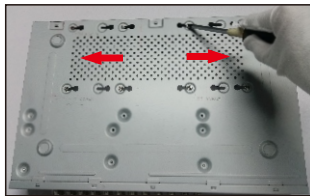
2. Packing Check

Please check the device and the accessories after getting the device. If there are any damages, shortages or defects, please contact your dealer immediately.

3. HDD Installation

This series of the product supports 2 SATA hard drives. Please make sure that the device is powered off before the installation. The pictures of the installation are only for reference, please take the real object as the standard.

- ① Loosen the screws to open the cover.
- ② Screw the screws into the holes of the HDD but not tighten them.
- ③ Put the HDDs onto the bottom of the machine.
- ④ Turn over the machine and secure the HDDs with the screws.
- ⑤ Connect the power and data cables.

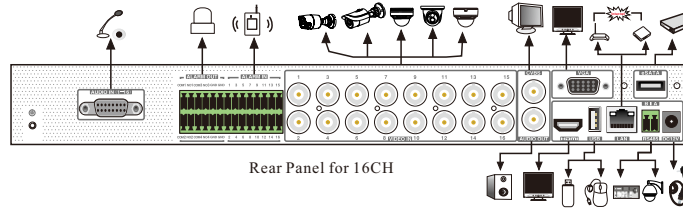


- ⑥ Install back the cover and secure it with the screws.

Tips: Please check the inside structure of the device and make sure the cables connected well before installing the cover back. Please format the HDD before using.

4. Rear Panel Instruction

The interfaces of the rear panels are for reference only.



Name	Description
ALARM OUT	Relay output; connect to external alarm
ALARM IN	Alarm input for connecting sensor
GND	Ground
VIDEO IN	Video input
CVBS	CVBS output
AUDIO OUT	Audio output
AUDIO IN	Audio input
HDMI	Connect to high definition display device
VGA	Connect to monitor
LAN	Network port
USB	Connect to USB storage devices or USB mouse
e-SATA	Connect to HDD with e-SATA interface
RS485	Connect to keyboard or speed dome. A is TX+, B is TX-
DC12V	Power input

5. Startup & Shutdown

▶ Startup

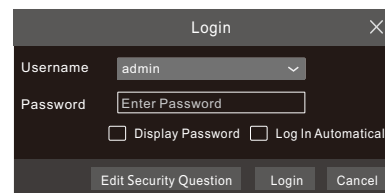
- ① Connect the monitor and the power.
- ② The device will boot and the power indicator will display blue.
- ③ A wizard window will pop up.

▶ Shutdown

Click “Start” and then select “Shutdown” icon. This will bring up a shutdown window. The device will shut down by clicking “OK” button. Then disconnect the power.

6. Login

The default username is **admin** and the default password is **123456**. You must configure the wizard if you start the DVR for the first time and you may change the password when you configure the wizard for the first time. You can skip the settings of wizard next time. Click “Start” and select “Login”. This will take you to see a login box. Enter default username and password you set and you can see the live image.



7. Analog Camera Connection

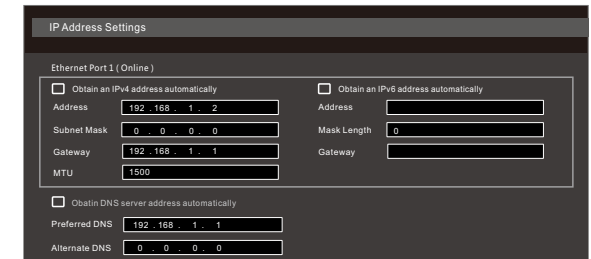
First connect the camera to the DVR. Then go to Start → Settings → Camera → Manage Camera → Camera Signal to checkmark the video mode. The actual signals input shall correspond to the video mode. Please refer to User Manual for details.

8. Network Configuration & Add IP Camera

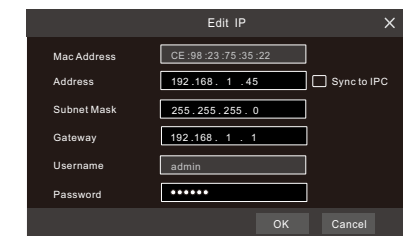
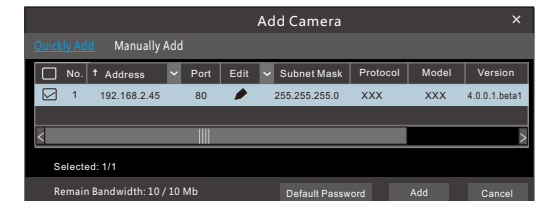
After you finish adding IP cameras, you can see the live images through the monitor of the DVR. The following will mainly introduce how to add the IP cameras via LAN/WAN.

▶ LAN

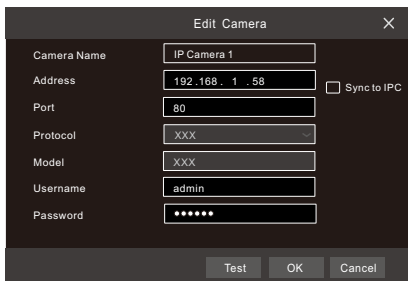
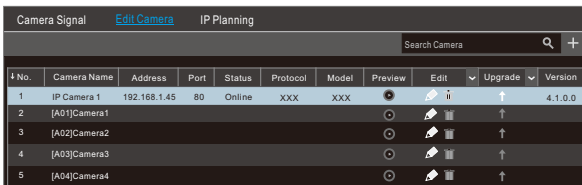
- ① Set the network of the DVR. Go to Start → Settings → Network → TCP/IP. Enter IP address, subnet mask, gateway, etc. If using DHCP, please enable DHCP in both the DVR and the router.
- ② Go to Start → Settings → Network → Port. Enter HTTP port (the default value is 80), server port (the default port is 6036).
- ③ Click “Apply” to save the settings.



- ④ Go to Start → Settings → Camera → Add Camera. The DVR will automatically refresh the cameras searched. The IPC which supports the Onvif protocol may be added manually. If the IPC searched is not in the same local network as the DVR, you should select the device and click to modify the IP address.



⑤ Checkmark the device you want to add and then click “Add” button. The DVR will automatically refresh the cameras and return to “Edit Camera” interface. “Online” status means connecting the device successfully and you will see the live image. You may select the added device and click button to modify channel, IP address, ect.



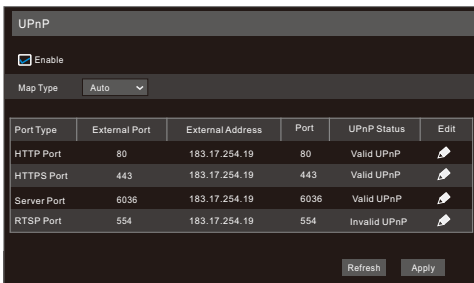
► WAN

- ① Set the network of the DVR. Go to Start → Settings → Network → PPPoE. Enter static IP address or enable PPPoE and then enter the user name and password received from your ISP.
- ② Go to Start → Settings → Camera. Click “Add Camera” or behind the column of the search camera and select “Manually Add” to add the IP cameras. Enter IP address, server port, username and password of the IP camera. The IP camera must be connected over WAN. And here the IP address of the IP camera must be a WAN IP address.

9. UPnP

You can use the UPnP function to enable the fast connection of the device to WAN via a router without port mapping.

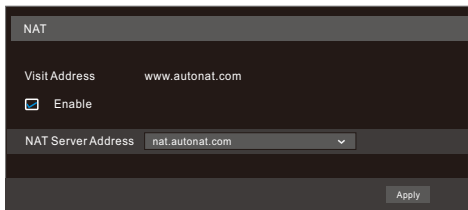
- ① Go to Start → Settings → Network → UPnP, and enable UPnP and then click “Apply” button to save.
- ② Enable the UPnP function in the router.
- ③ Click “Refresh” button to refresh the UPnP status. If the UPnP status were still “Invalid UPnP” after refreshing it for several times, the port may be wrong. Please change the mapping type to “Manual” and then click to modify the port until the UPnP status turns to “valid UPnP”.



10. NAT

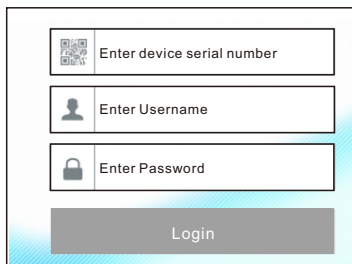
► NAT Settings

- ① The DVR shall be powered on and connected to the network.
- ② Go to Start → Settings → Network → TCP/IP. You can obtain the IP address, subnet mask and gateway automatically. You can also manually enter them according to the actual network situation. Please make sure the network segment is the same as that of the network which is used.
- ③ Set the preferred or alternative DNS Server. Click “Apply” to save the parameters.
- ④ Go to Start → Settings → Network → NAT tab. Enable NAT and select the NAT Server Address (The default NAT Server Address is *nat.autonat.com*). Click “Apply” to save the parameters.



► NAT Access

After finishing the NAT settings, you can enter *www.autonat.com* in the address bar of your browser and then press enter to go to the following interface. If you are the first time to access the NAT, you shall download and install the ActiveX according to the popup tips. After installing ActiveX successfully, it will pop the login box.



Device Serial Number: Click on the menu bar at the bottom of the live interface to check the serial number or go to Start → Settings → Network → Network Status to check the serial number of the DVR).

Username: The username of the DVR. The default username is admin.

Password: The password of the DVR. The password is set by yourself when you configure the wizard for the first time.

11. Manual Recording

Before recording, please install and format a HDD. In the live interface you can see the menu toolbar. Click button to start recording. Click it again to stop recording. You can also click to check the status of the recording.



12. Playback

► Instant playback

Click “Instant Playback” in the right-click menu of the camera’s preview window to select or drag the playback progress bar to change the playback time to play back the record.

► General playback

Click on the tool bar at the bottom of the live preview interface or click Start → Playback to go to the playback interface as shown below. You can also add the playback cameras manually. Click in the playback window to pop up the “Add Camera” window. Check the cameras in the window and then click “Add” to add playback camera. The record files of the added playback camera will be played in the playback interface.

